

**CODE NUMBER**

3366121

**DESCRIPTION**

Sloan® XLERATOR® Sensor-Operated Wall - Surface Hand Dryer EHD-501, HEPA110/120V, Sloan® XLERATOR® Sensor-Operated Wall - Surface Hand Dryer.

**DETAILS**

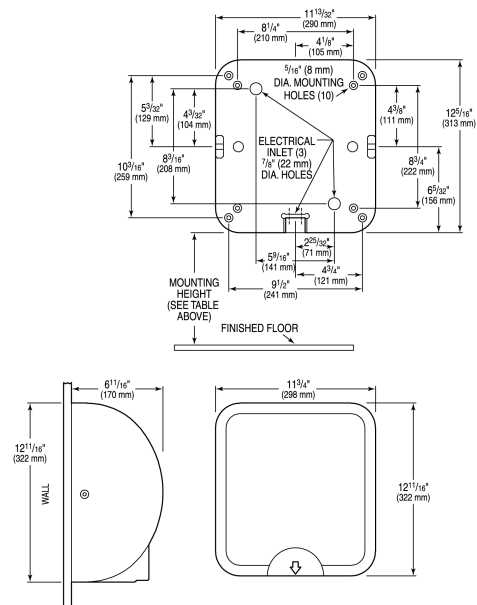
- Finish: Graphite (GR)
- Voltage: 110/120V ( )
- Wattage: 50/60Hz ( )
- Amperage: 11.3-12.2 ( )
- Mounting: Wall - Surface
- Power Type: Hardwired
- Depth: 6 86/125" (170mm)
- Height: 12 86/125" (322mm)
- Width: 11 3/4" (298mm)

**FEATURES**

- Series commutated, through-flow discharge, vacuum type motor/blower combination
- Infrared Optical Sensor with thirty-five (35) second lockout feature
- Air velocity of 16,000 LFM (linear feet per minute) at an outlet temperature of 135°F/57°C at a 72°F/22°C ambient room temperature
- Decibel Rating of 78-80 dB
- HEPA Filter
- Adjustable speed, sound and heat control
- Electric Specifications: 110-120V - 11.3-12.2 Amps, 50/60 Hz
- Heating element constructed of Nichrome wire and protected by an automatic resetting thermostat
- One piece heavy-duty rib reinforced die cast zinc alloy housing
- Bright chrome plate or chip-proof electrostatically-applied epoxy finish
- Available in Polished White, Matte White, Polished Chrome, Brushed Nickel and Graphite
- Tamper-proof cover fasteners are included

**DOWNLOADS**

- [Sloan XLERATOR and Sloan XLERATOR Eco Hand Dryer Instructions](#)
- [EHD-501 Series Hand dryers Repair and Maintenance Guide](#)
- [Additional Downloads](#)



**COMPLIANCES & CERTIFICATIONS**



(BAA Compliant, cUL Certified, EPD, HEPA, Proposition 65, UL Certified)

**RECOMMENDED SPECIFICATION**

Sloan Xlerator Sensor Operated Hand Dryer. 120V/110V Graphite Finish.

**NOTES**

All information contained within this document subject to change without notice.