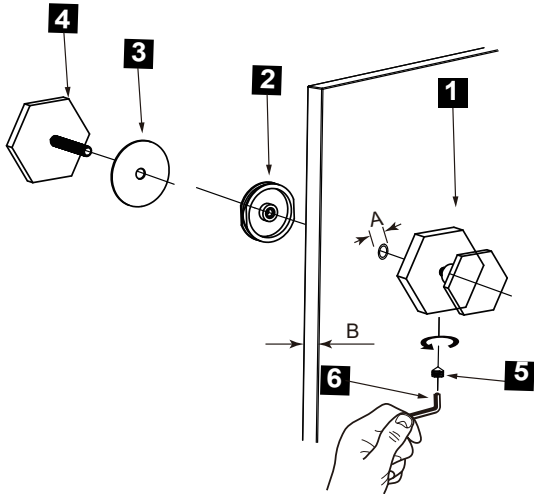


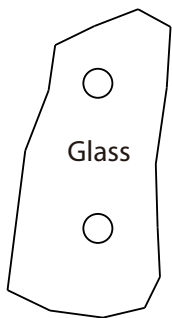
PISA COLLECTION

SINGLE SDH KNOB

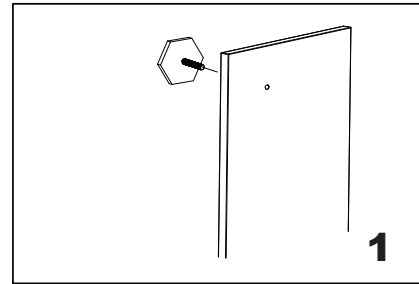
3427501



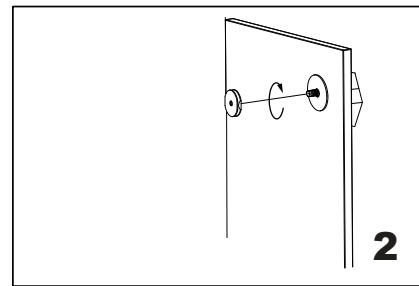
- 1.Knob x 1
- 2.Fixing Bracket x 1
- 3.Clear Gasket x 2
- 4.End Cap x 1
- 5.Set Screw M5 x 1
- 6.Allen Key 2.5mm x 1



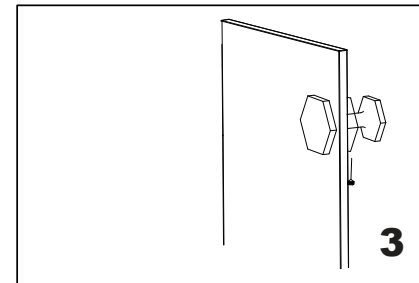
GLASS INFO		
A	3/8"(10mm)	Glass Hole Diameter
B	6-12mm	Glass Thickness



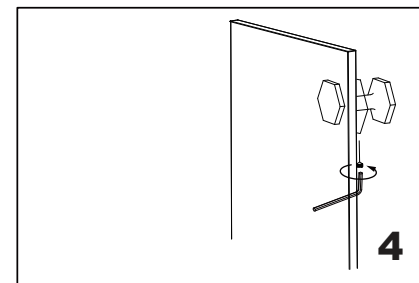
Install the end cap (bolt) through the glass hole, make sure the rubber gaskets are between end cap&glass.



Screw in the fixing bracket into the end cap bolt.



Add the knob on the fixing bracket,make sure the set screw hole in the bottom.



Fix the set screw on the end cap,tighten it to avoid loose from fixing brackets.