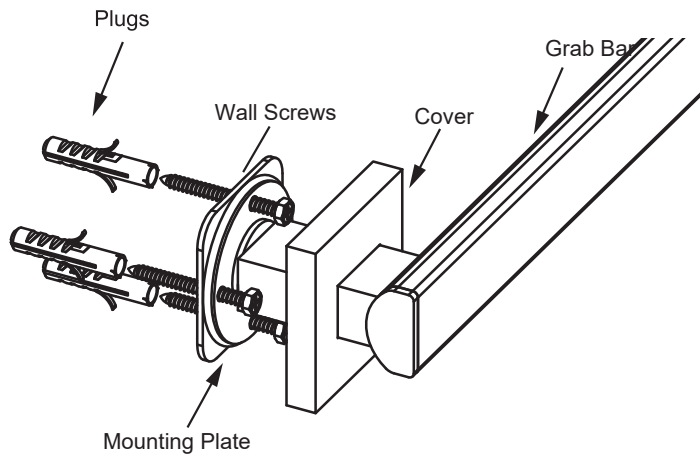


LISBON COLLECTION

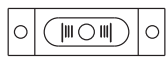
GRAB BAR

AVAILABLE IN: 12"/18"/24"/36"/42"

2779512/9518/9524/9536/9542



Tools required for installation



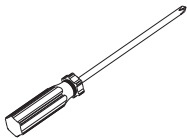
Level



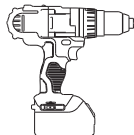
Pencil



Wrench



Screwdriver



Drill



Hammer

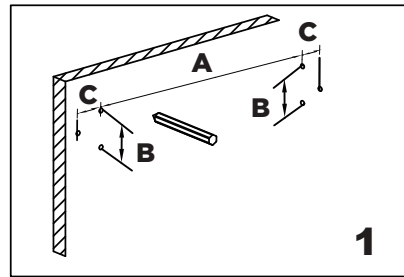
A=Plate TOP holes center to center distance

B=Plate TOP hole to BOTTOM hole distance

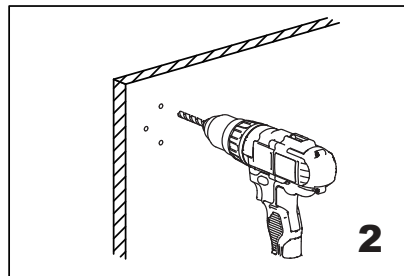
C=Plate TOP/BOTTOM holes to MID hole distance

| Product Code | Sizes (Inches/mm) | | |
|--------------|-------------------|-----------|---------|
| | A | B | C |
| 2779512 | 11 3/4" /300 | 1 3/4"/45 | 1"/22.5 |
| 2779518 | 17 3/4"/450 | 1 3/4"/45 | 1"/22.5 |
| 2779524 | 23 5/8"/600 | 1 3/4"/45 | 1"/22.5 |
| 2779536 | 35 1/2"/900 | 1 3/4"/45 | 1"/22.5 |
| 2779542 | 42 1/8"/1070 | 1 3/4"/45 | 1"/22.5 |

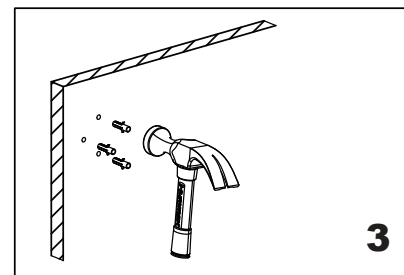
Fig.1



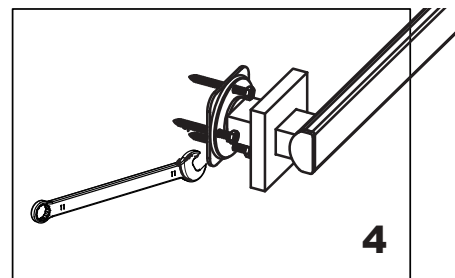
Mark (on the wall) locations of plugs through mounting plate using a pencil, refer to Fig.1



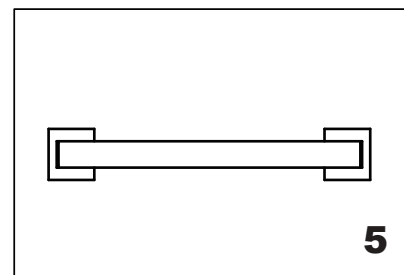
Drill 3/16" holes, make sure to keep drill level



Insert plugs into drilled holes, using a hammer to tap the plugs in, be careful not to break tile



Driver bolt nut directly into holes



Tighten the cover on the Mounting plate