

## BT0406.01 SPECIFICATIONS

### halo·1 blu·stone™ freestanding bathtub

#### FEATURES:

- Freestanding, blu·stone™ bathtub
- Streamlined, high profile one piece design
- 63" (1600mm) L x 30" (760mm) W x 21¾" (550mm) H
- Includes integral slot overflow & matching blu·stone™ waste cover
- Made of blu·stone™ providing the look and feel of natural stone
- Stronger and more durable than acrylic
- Non-porous, stain resistant surface that does not require sealing
- Does not promote bacteria, mold or fungi
- Varying slopes allow bather to sit upright or extend back
- Tailpiece not included (Blu recommends BTWaste.RN or BTWaste.Cl.RN)

#### SPECIFICATIONS:

Basin Area:	41½" (1050mm) x 21¾" (550mm)*
Top Area:	61½" (1560mm) x 28¾" (720mm)*
To Overflow:	2¼" (60mm)*
Water Depth:	14" (356mm)
Slope of Backrest:	68°/54°*
Capacity:	70G (265L)*
Weight:	309lbs (140kg)*
Hot water supply req'd:	Should be 70% of water capacity of tub or greater
Warranty:	Five Year Warranty (Residential use) One Year Warranty (Commercial use)
Material:	blu·stone™
Shipping Weight:	441lbs (200kg)*
Shipping Dimensions:	(LWH) 65¾" x 32¾" x 22¾" (1670mm x 830mm x 580mm)*

#### COLORS/FINISHES:

White Matte or Gloss as standard  
Available in a range of blu·stone™ colors + finishes (special order)

#### ACCESSORIES (sold separately):

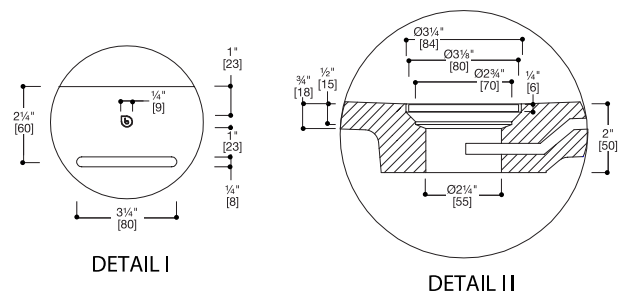
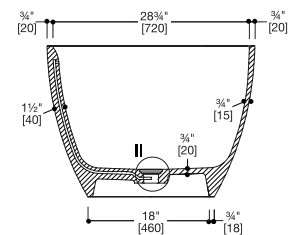
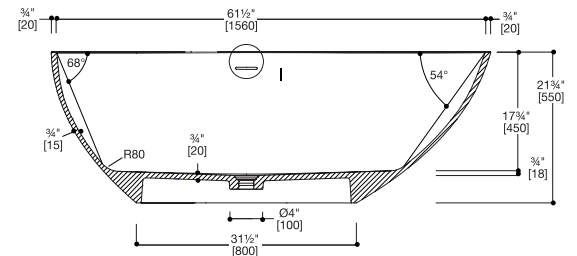
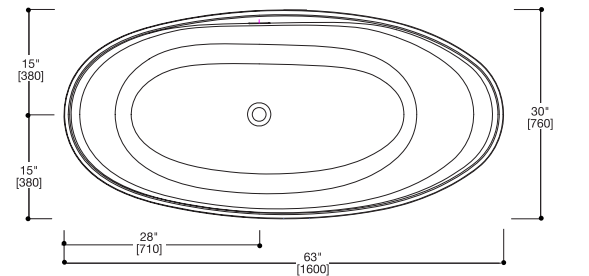
- BTWaste.RN or BTWaste.Cl.RN Island tub drain for easy installation

#### INSTALLATION NOTES:

Install this product according to the installation guide.  
Floor support under bath must provide for a minimum of 1600 lbs (725kg). Installation will vary. Our products must be installed by certified professionals only and according to our installation guide as well as federal, provincial / state and local building codes and regulations

#### CODES / STANDARDS APPLICABLE:

- Meets or exceeds ANSI / ASME standard  
CSA B45.5.11 / IAPMO Z124
- IAPMO / ANSI Z124.8
- CSA



\*Approximate measurements for comparison only.

Note: These dimensions and specifications are subject to change without notice.